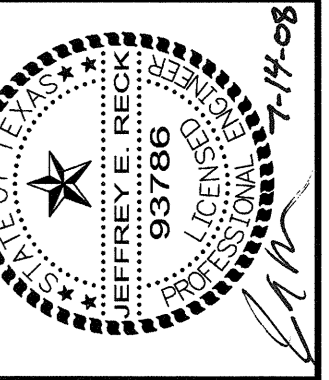
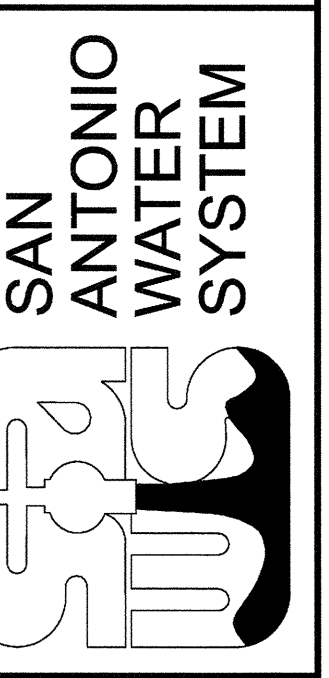


- NOTES:
1. A TOTAL OF FOUR (4) GATES SHALL BE DEMOLISHED. THE GATE LOCATED ON NORTH END OF STRUCTURE SHALL REMAIN IN PLACE AS SHOWN.
 2. REMOVAL OF EXISTING GATES SHALL BE ACCOMPLISHED AFTER NEW GATES HAVE BEEN INSTALLED (SEE SHEET 13M01 FOR NEW GATES).
 3. EXISTING STEMS, LEAVES (SLIDES), AND ACTUATORS SHALL BE REMOVED. EXISTING GATE FRAMES INSIDE STRUCTURE SHALL REMAIN IN PLACE.
 4. CONTRACTOR SHALL REMOVE EXISTING ALUMINUM CHECKERED PLATES (IN INTERIOR PORTION OF THE STRUCTURE) ONLY AS NECESSARY TO FACILITATE REMOVAL OF THE EXISTING GATE COMPONENTS. EXISTING ALUMINUM CHECKERED PLATES SHALL BE REPLACED AFTER GATES HAVE BEEN REMOVED.
 5. CONTRACTOR IS RESPONSIBLE FOR COORDINATING WITH PLANT OPERATIONS STAFF AND FOR ISOLATION OF THE EXISTING GATES AND DEWATERING OF THE STRUCTURE (IF NECESSARY).
 6. CONTRACTOR SHALL PROVIDE A DETAILED SAFETY PLAN FOR REVIEW PRIOR TO START OF WORK. SAFETY PLAN SHALL DESCRIBE MEASURES THAT WILL BE TAKEN FOR THE EVACUATION OF THE STRUCTURE DURING PEAK FLOW, INCLUDING, BUT NOT LIMITED TO ALARMS, FANS, LADDERS, ETC.
 7. CONTRACTOR SHALL VERIFY EXISTING DIMENSIONS AND ELEVATIONS IN THE FIELD.

No.	DATE	REVISIONS	APP.

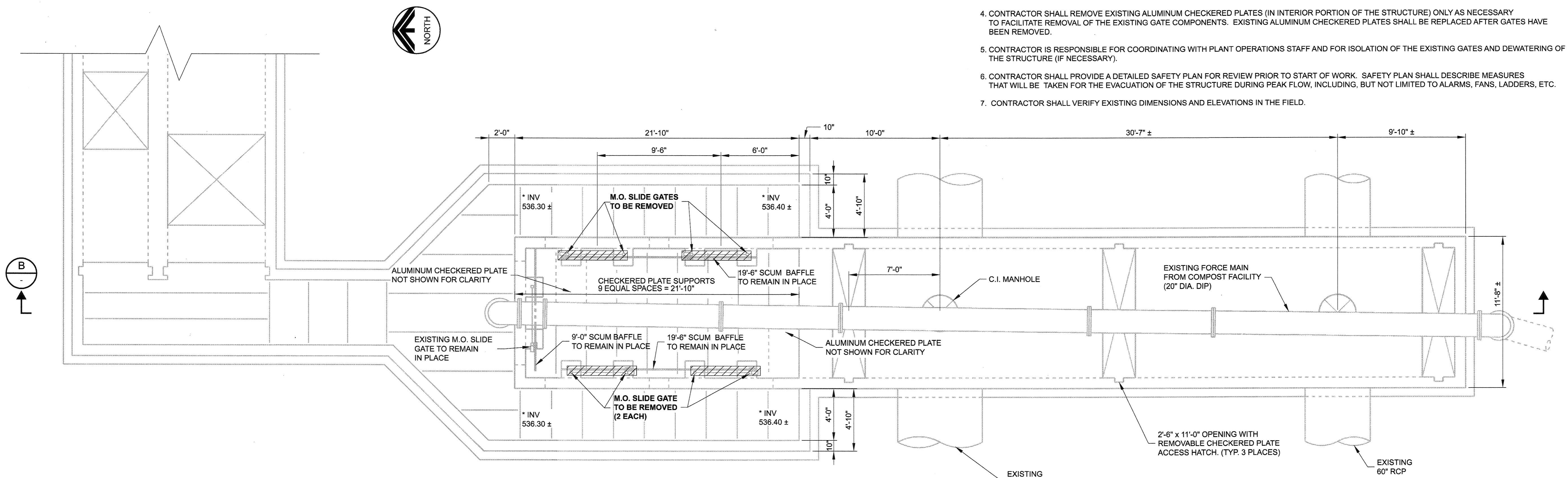


SAWS JOB No. 06-6502
LEON CREEK WRC
IMPROVEMENTS PROJECT

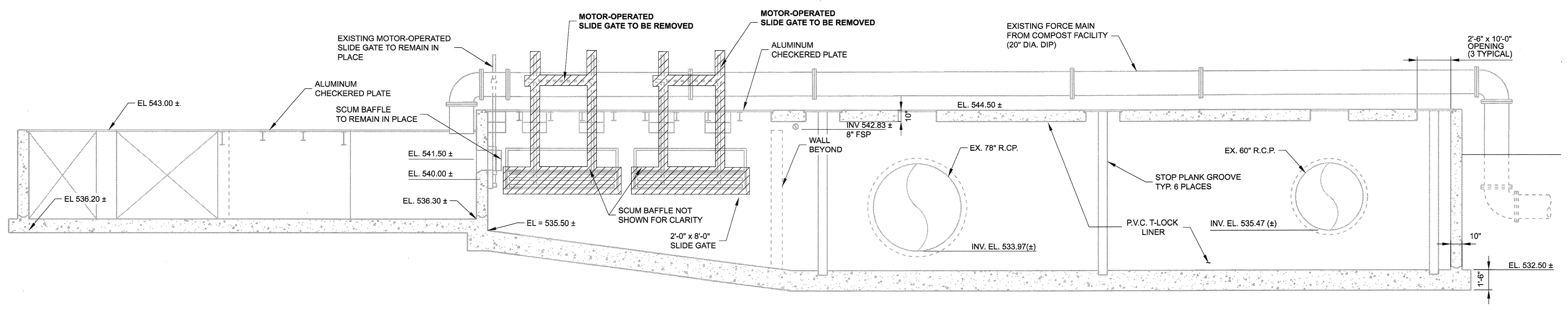
DEMOLITION
FEB DIVERSION STRUCTURE
DEMOLITION PLAN & SECTION

Designed by: JR
Drawn by: KG
Checked by: JR

Drawing 13D01
Sheet 7 of 472



A FEB DIVERSION STRUCTURE PLAN
SCALE: NTS
FILE: LC-06-650-013-S-9100.dgn



B SECTION
SCALE: NTS
FILE: LC-06-650-013-S-9200.dgn

CONTRACT DOCUMENTS DATED JULY 2008. AS PART OF THE BIDDING DOCUMENTS (DRAWINGS AND SPECIFICATIONS) AND SUBSEQUENTLY ISSUED ADDENDA HAVE BEEN MERGED INTO ONE CONFORMING SET OF DOCUMENTS FOR THE CONVENIENCE OF THE CONTRACTOR. THE "CONFORMED" DOCUMENTS ARE FOR REFERENCE ONLY AND ARE NOT CONTRACT DRAWINGS. IF INCONSISTENCIES OR AMBIGUITIES BETWEEN "CONFORMED" DOCUMENTS AND CONTRACT DOCUMENTS ARE FOUND, THE CONTRACT DOCUMENTS SHALL GOVERN.

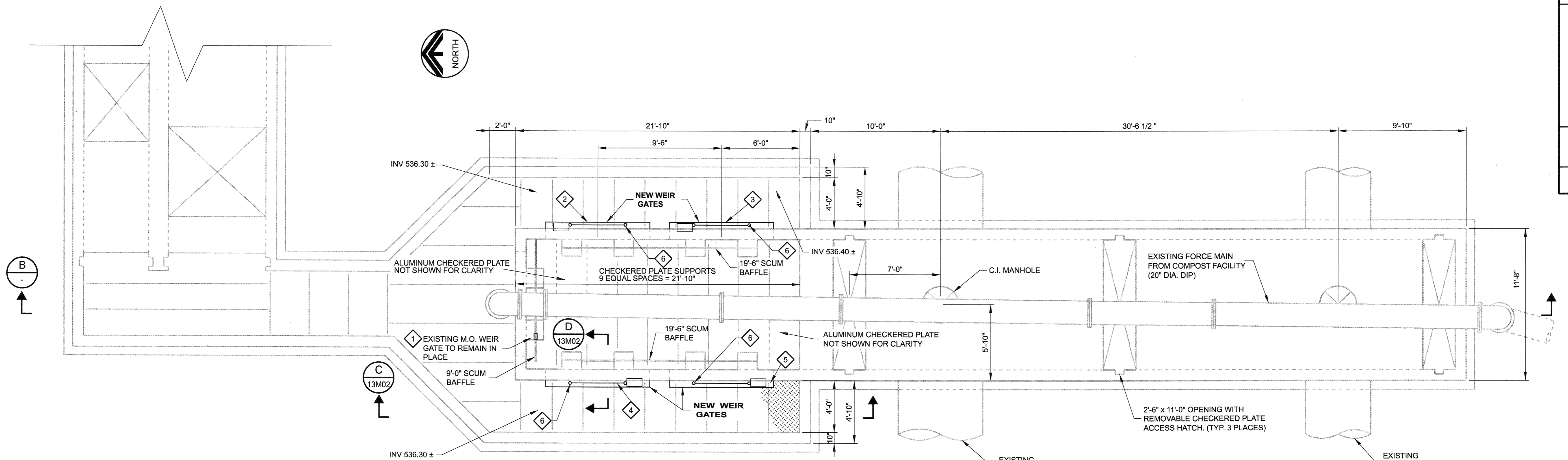
LAST SAVED BY: wgdaley DATE: 02-JUL-2008 18:39 PROJECT NO. 7473A.10 FILE NAME: LC-06-650-013-D01.dgn

FILE NAME: LC-06-650-013-M01.dgn

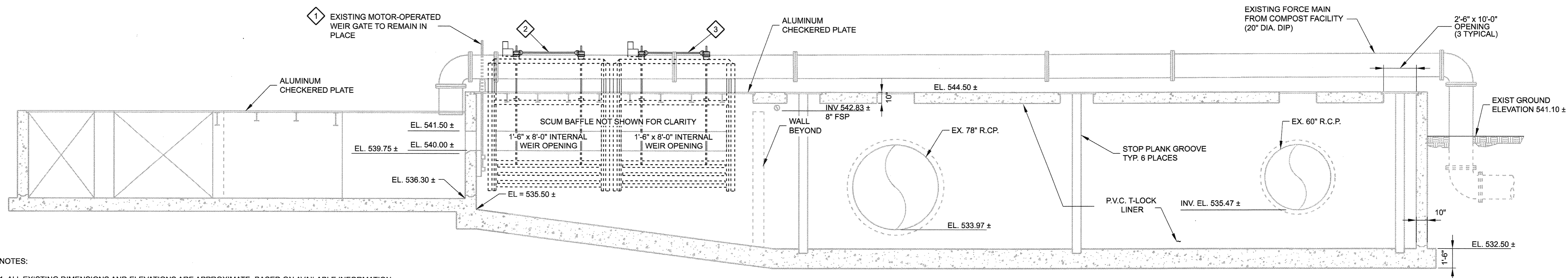
PROJECT NO. 7473A.10

DATE: 02-JUL-2008 18:39

LAST SAVED BY: kgrpdley



A FEB DIVERSION STRUCTURE PLAN
 SCALE: NTS
 FILE: LC-06-650-013-S-9100.dgn



B SECTION
 SCALE: NTS
 FILE: LC-06-650-013-S-9200.dgn

- NOTES:
- ALL EXISTING DIMENSIONS AND ELEVATIONS ARE APPROXIMATE, BASED ON AVAILABLE INFORMATION.
 - A TOTAL OF FOUR (4) NEW GATES SHALL BE INSTALLED IN THE LOCATIONS AS SHOWN. THE EXISTING GATE (LC-IING05) LOCATED ON NORTH END OF STRUCTURE SHALL REMAIN IN PLACE AS SHOWN.
 - NEW GATES SHALL BE DOWNWARD OPENING, WEIR TYPE, DOUBLE STEMMED AND SHALL INCLUDE MOTORIZED ACTUATORS (SEE SHEET 13M02 FOR GATE SCHEDULE AND DETAILS).
 - NEW GATES SHALL BE FACE MOUNTED ON THE OUTSIDE OF THE EXISTING CONCRETE WALL AS SHOWN. CONTRACTOR SHALL ENSURE THAT ANCHOR BOLTS FOR NEW GATES DO NOT CONFLICT WITH ANCHOR BOLT SPACING OF EXISTING GATES.
 - EXISTING T-LOCK LINER INSIDE STRUCTURE SHALL REMAIN IN PLACE. LINER MAY BE CUT ONLY FOR INSTALLATION OF NEW GATE FRAMES AS SHOWN ON SHEET 13M02. ANY DAMAGE DONE BY CONTRACTOR TO THE EXISTING LINER SHALL BE REPAIRED AT CONTRACTOR'S EXPENSE IN ACCORDANCE WITH LINER MANUFACTURE'S RECOMMENDATIONS.
 - REMOVAL OF FOUR (4) EXISTING GATES SHALL BE ACCOMPLISHED AFTER NEW GATES HAVE BEEN INSTALLED, TESTED AND ARE FULLY OPERATIONAL (SEE SHEET 13D01 FOR EXISTING GATE DEMOLITION).
 - CONTRACTOR SHALL REMOVE EXISTING ALUMINUM CHECKERED PLATES ONLY AS NECESSARY FOR INSTALLATION OF THE NEW GATES. EXISTING ALUMINUM CHECKERED PLATES SHALL BE REPLACED AFTER NEW GATES HAVE BEEN INSTALLED.
 - CONTRACTOR SHALL BE RESPONSIBLE FOR ISOLATION OF WORK AREA AND DEWATERING OF THE STRUCTURE (IF NECESSARY).
 - CONTRACTOR SHALL PROVIDE A DETAILED SAFETY PLAN FOR REVIEW PRIOR TO START OF WORK. SAFETY PLAN SHALL DESCRIBE IN DETAIL ALL MEASURES THAT WILL BE TAKEN FOR THE EVACUATION OF THE STRUCTURE DURING HIGH FLOW. SAFETY PLAN SHALL ALSO INCLUDE DETAILED SAFETY PROVISIONS FOR WORKING IN A HAZARDOUS AREA, INCLUDING, BUT NOT LIMITED TO ALARMS, FANS, LADDERS, GAS MONITORING EQUIPMENT, ETC.
 - CONTRACTOR SHALL FIELD VERIFY EXISTING DIMENSIONS AND ELEVATIONS FOR NEW GATE FRAMES PRIOR TO ORDERING, AND SHALL VERIFY DIMENSIONS ON SHOP DRAWINGS.
 - FOR A PROPOSED CONSTRUCTION SEQUENCE REFER TO SPECIFICATION SECTION 01140 WORK RESTRICTIONS.

KEY TAGS:

- 1 LC-IING05
- 2 LC-IING04
- 3 LC-IING02
- 4 LC-IING03
- 5 LC-IING01

6 CONTRACTOR SHALL PROVIDE OPENINGS IN CHECKERED PLATING FOR NEW GATE FRAMES AND STEMS AS REQUIRED. CONTRACTOR SHALL ADD ADDITIONAL GRATING SUPPORTS AS REQUIRED TO FRAME OPENINGS.

CONTRACT DOCUMENTS DATED JULY 2008. AS PART OF THE BIDDING DOCUMENTS (DRAWINGS AND SPECIFICATIONS) AND SUBSEQUENTLY ISSUED ADDENDA HAVE BEEN MERGED INTO ONE CONFORMING SET OF DOCUMENTS FOR THE CONVENIENCE OF THE CONTRACTOR. THE "CONFORMED" DOCUMENTS ARE FOR REFERENCE ONLY AND ARE NOT CONTRACT DRAWINGS. IF INCONSISTENCIES OR AMBIGUITIES BETWEEN "CONFORMED" DOCUMENTS AND CONTRACT DOCUMENTS ARE FOUND, THE CONTRACT DOCUMENTS SHALL GOVERN.

APP.	
REVISIONS	
DATE	
No.	

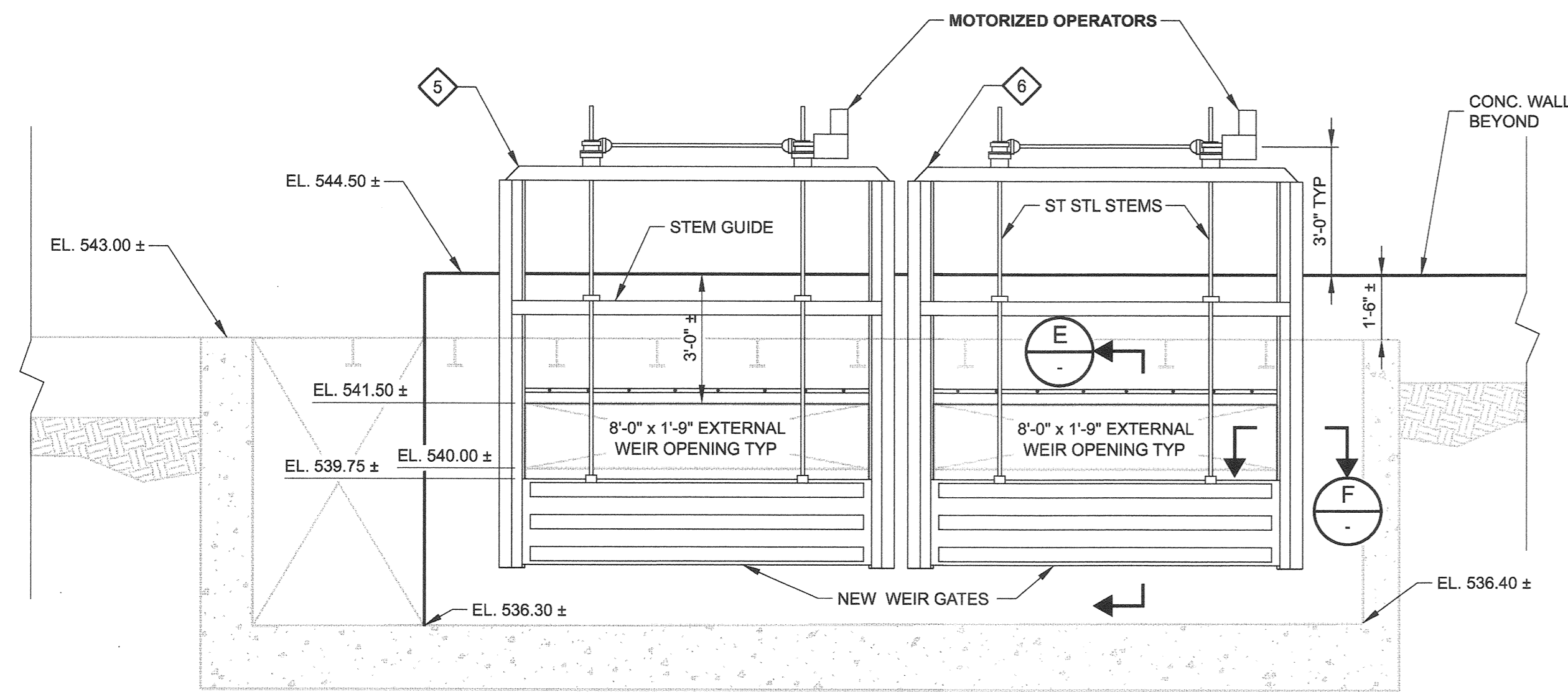
LNV ENGINEERING
engineers & consultants

carollo
Engineers...Working Wonders With Water™

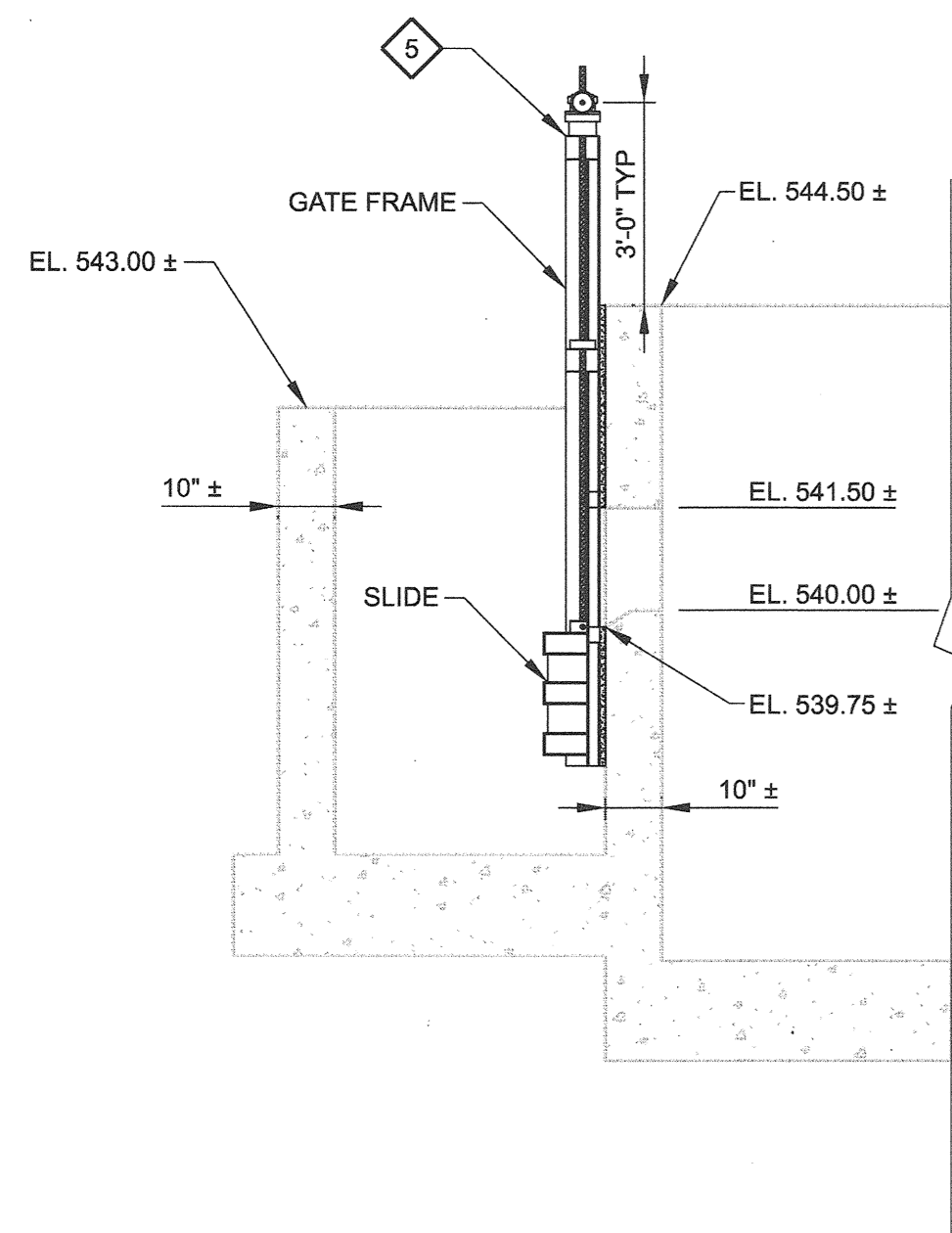
SAN ANTONIO WATER SYSTEM

SAWS JOB No. 06-6502
 LEON CREEK WRC
 IMPROVEMENTS PROJECT
 MECHANICAL
 FEB DIVERSION STRUCTURE GATE
 REPLACEMENT PLAN & SECTIONS

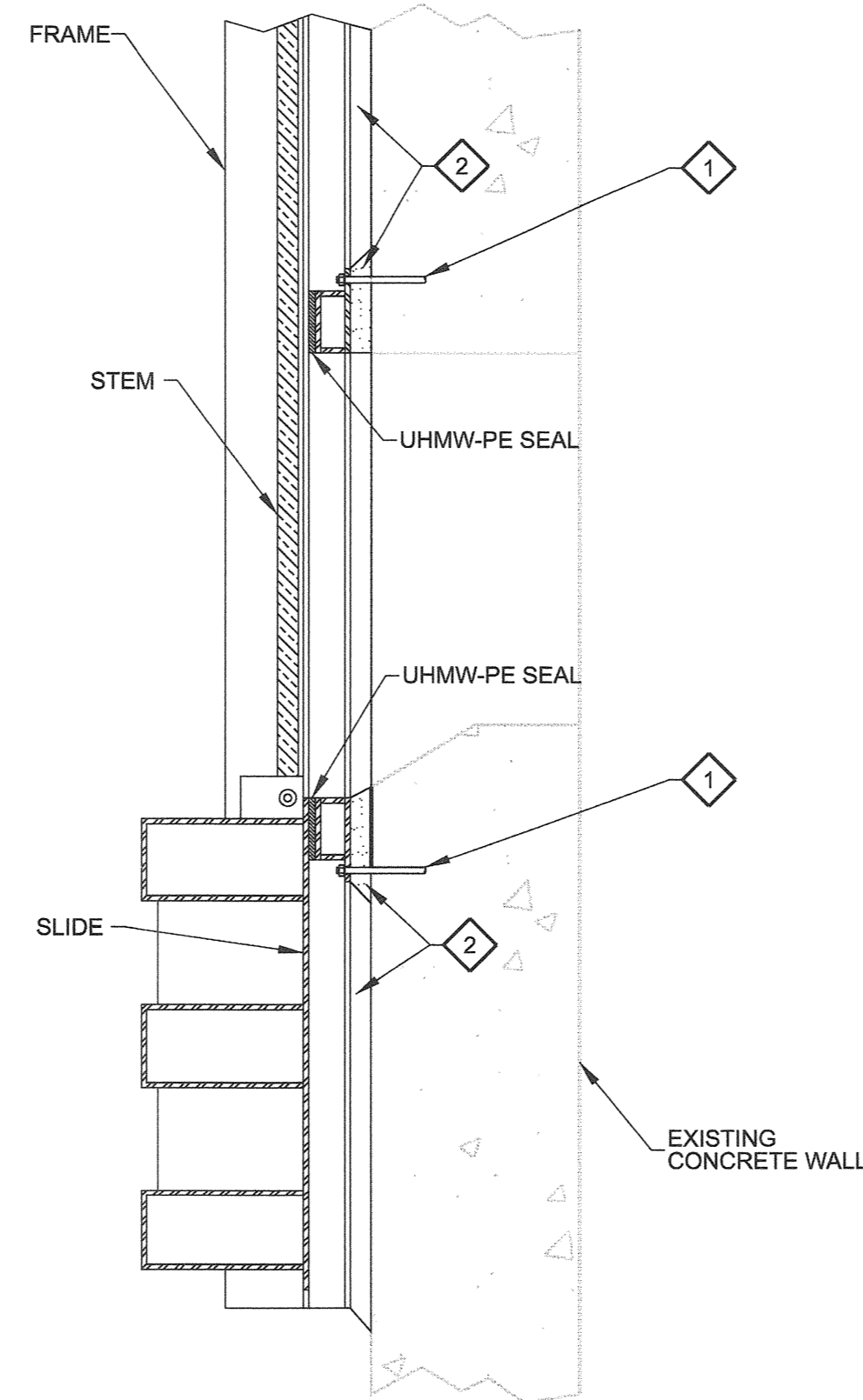
Designed by: _____
 Drawn by: KG
 Checked by: JR
 Drawing **13M01**
 Sheet 8 of 472



C SECTION
13M01 SCALE: NTS
FILE: LC-06-650-013-M02.dgn



D SECTION
13M01 SCALE: NTS
FILE: LC-06-650-013-M02.dgn



E SECTION
SCALE: NTS
FILE: LC-06-650-013-M02.dgn

NOTES:

- ALL EXISTING DIMENSIONS AND ELEVATIONS ARE APPROXIMATE, BASED ON AVAILABLE INFORMATION.
- CONTRACTOR SHALL FIELD VERIFY EXISTING DIMENSIONS AND ELEVATIONS FOR NEW GATE FRAMES PRIOR TO ORDERING GATES AND VERIFIED DIMENSIONS ON SHOP DRAWINGS.
- NEW GATES SHALL BE DOWNWARD OPENING, WEIR TYPE, DOUBLE STEMMED AND SHALL INCLUDE MOTORIZED ACTUATORS.
- NEW GATES SHALL BE FACE MOUNTED ON THE OPPOSITE SIDE OF THE WALL AS THE EXISTING GATES. CONTRACTOR SHALL ENSURE THAT ANCHOR BOLTS FOR NEW GATES DO NOT CONFLICT WITH ANCHOR BOLT SPACING OF EXISTING GATES.
- EXISTING PVC LINER INSIDE STRUCTURE SHALL REMAIN IN PLACE. LINER MAY BE CUT ONLY FOR INSTALLATION OF NEW GATE FRAMES AS SHOWN. ANY DAMAGE DONE BY CONTRACTOR TO THE EXISTING LINER SHALL BE REPAIRED AT CONTRACTOR'S EXPENSE IN ACCORDANCE WITH LINER MANUFACTURER'S RECOMMENDATIONS.
- REMOVAL OF EXISTING GATES SHALL BE ACCOMPLISHED AFTER NEW GATES HAVE BEEN INSTALLED, TESTED AND ARE FULLY OPERATIONAL (SEE DRAWING 13D01 FOR EXISTING GATE DEMOLITION).
- CONTRACTOR SHALL BE RESPONSIBLE FOR ISOLATION OF WORK AREA AND DEWATERING OF THE STRUCTURE, IF NECESSARY.
- CONTRACTOR SHALL PROVIDE A DETAILED SAFETY PLAN FOR REVIEW PRIOR TO START OF WORK. SAFETY PLAN SHALL DESCRIBE IN DETAIL ALL MEASURES THAT WILL BE TAKEN FOR THE EVACUATION OF THE STRUCTURE DURING HIGH FLOW. IT SHALL ALSO INCLUDE SAFETY PROVISIONS FOR WORKING IN A HAZARDOUS AREA, INCLUDING, BUT NOT LIMITED TO ALARMS, FANS, LADDERS, GAS MONITORING, ETC.
- FOR A PROPOSED CONSTRUCTION SEQUENCE REFER TO SPECIFICATION SECTION 01140 WORK RESTRICTIONS.

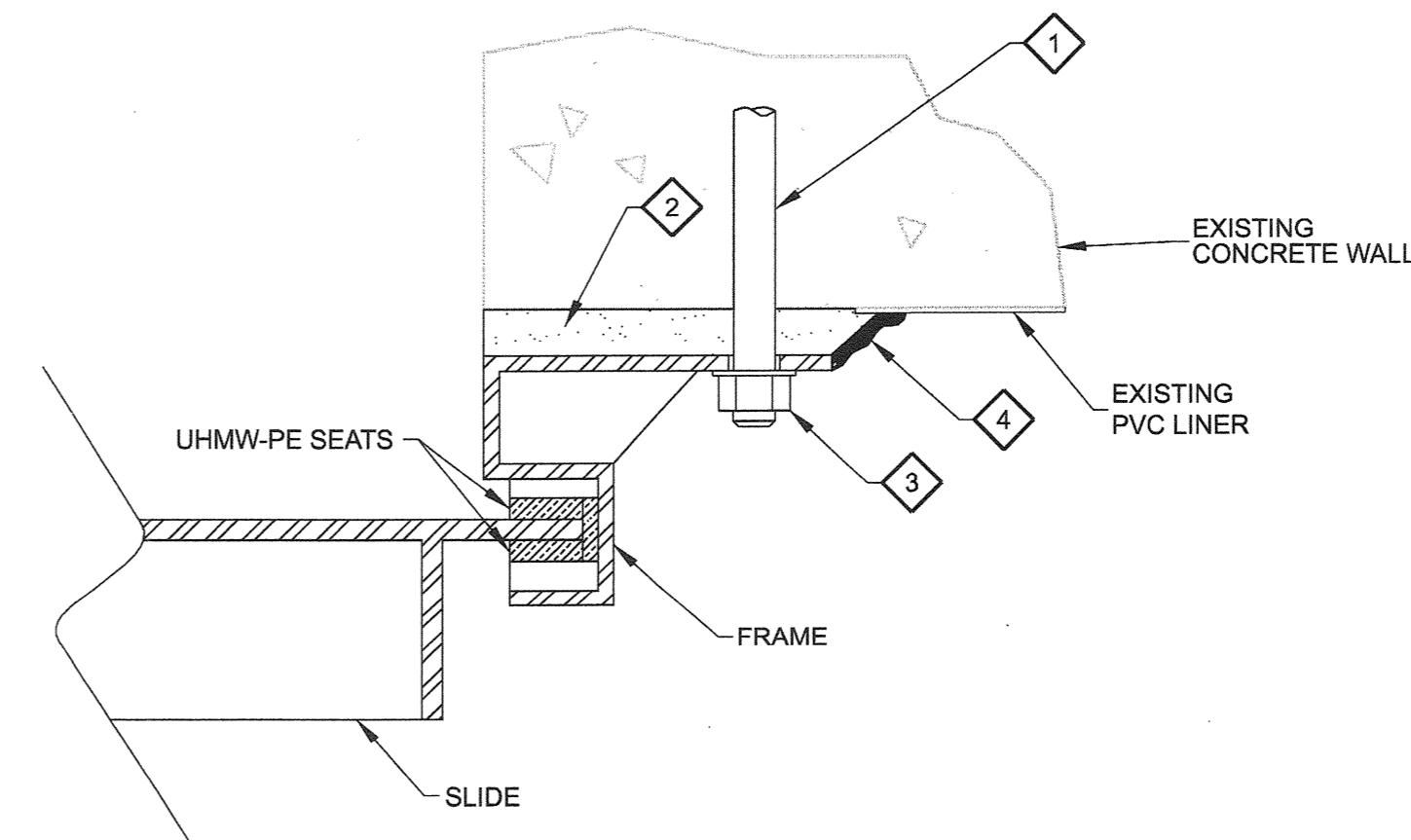
KEY NOTES:

- USE EPOXY ADHESIVE ANCHORS PER SPECIFICATION 03055 OF SUFFICIENT LENGTH AND QUANTITY TO ANCHOR GATE PER MANUFACTURER'S RECOMMENDATIONS.
- PLACE NON-SHRINK DRY PACK GROUT UNDER FRAME.
- USE STAINLESS STEEL (TYPE 316) HARDWARE.
- ROUGHEN THE SURFACE OF THE T-LOCK LINING WITH A ROTARY ABRASIVE DISK BEFORE PLACEMENT OF GROUT AND SEAL INTERFACE OF NEW GROUT AND EXISTING LINER WITH EPOXY
- LC-ING03
- LC-ING01

TAG ID NO.	OPENING SIZE "W" x "H"	CLOSURE TYPE	FRAME TYPE	FRAME MOUNTING	FRAME & SLIDE MATERIAL	DESIGN HEAD (FT)	STEM TYPE (TYPE)	STEM MATERIAL	TYPE OF OPERATOR	
LC-ING01	8'-0" x 1'-9"	UC	SC	CWFM	316L ST STL	4'-9"	US	RS	316 ST STL	EMO
LC-ING02	8'-0" x 1'-9"	UC	SC	CWFM	316L ST STL	4'-9"	US	RS	316 ST STL	EMO
LC-ING03	8'-0" x 1'-9"	UC	SC	CWFM	316L ST STL	4'-9"	US	RS	316 ST STL	EMO
LC-ING04	8'-0" x 1'-9"	UC	SC	CWFM	316L ST STL	4'-9"	US	RS	316 ST STL	EMO

KEY: CWFM = CONCRETE WALL FACE MOUNTED; EMO = ELECTRIC MOTOR OPERATOR; RS = RISING STEM; SC = SELF CONTAINED; 316 ST STL = STAINLESS STEEL TYPE 316; 316L ST STL = STAINLESS STEEL TYPE 316L; UC = UPWARD CLOSING; US = UNSEATING

G FEB DIVERSION STRUCTURE GATE SCHEDULE
SCALE: NTS
FILE:



F SECTION
SCALE: NTS
FILE: LC-06-650-013-M02.dgn

CONTRACT DOCUMENTS DATED JULY 2008. AS PART OF THE BIDDING DOCUMENTS (DRAWINGS AND SPECIFICATIONS) AND SUBSEQUENTLY ISSUED ADDENDA HAVE BEEN MERGED INTO ONE CONFORMING SET OF DOCUMENTS FOR THE CONVENIENCE OF THE CONTRACTOR. THE "CONFORMED" DOCUMENTS ARE FOR REFERENCE ONLY AND ARE NOT CONTRACT DRAWINGS. IF INCONSISTENCIES OR AMBIGUITIES BETWEEN "CONFORMED" DOCUMENTS AND CONTRACT DOCUMENTS ARE FOUND, THE CONTRACT DOCUMENTS SHALL GOVERN.

APP. REVISIONS DATE No.

LNV ENGINEERING
engineers & consultants

carollo
Engineers... Working Wonders With Water™

SAN ANTONIO WATER SYSTEM

SAWS JOB No. 06-6502
LEON CREEK WRC
IMPROVEMENTS PROJECT
FEB DIVERSION STRUCTURE GATE
REPLACEMENT DETAILS

Designed by: JER
Drawn by: KG
Checked by: JER
Drawing **13M02**
Sheet 9 of 472